

PROCESS CONTROLS

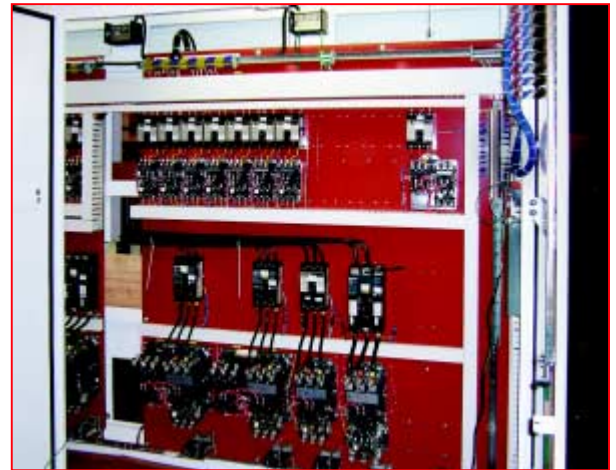


Hard-wired relay control panel with basic PID loops.



ICIS control panel

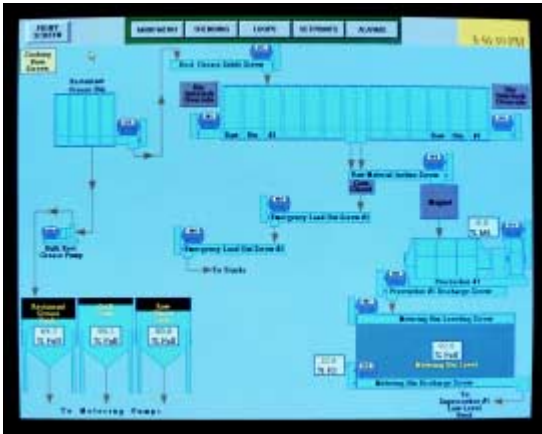
- **Hard-Wired Relay Controls** feature push-buttons, relays, interlocks, timers and load meters. **Basic PID Loops** can be added to the hard wired controls – individual PID controllers monitor and manage cooker temperature, raw material feed rate, cooker level, vapor pressure, cooked material discharge rate and steam flow.
- **ICIS® Automated Process Control** uses a Programmable Logic Controller. The operator interface consists of a desk and pre-programmed, simple-to-use personal computers with animated process graphics. The ICIS (**I**ntegrated **C**ontrol and **I**nformation **S**ystem) monitors and controls temperature, product level, weight, speed, pressure, flow rate, and motor load. It also gathers real-time data for monitoring the process and stores it for later management analysis, providing information on virtually every operating parameter that affects quality, throughput and efficiency. You can display this data on personal computers at the plant or at remote sites, and even connect directly to Dupps engineers.
- **The Motor Control Center**, used on both hard-wired and ICIS controls, is built in compliance with National Electric Code (NEC) and is inspected and approved by Underwriters Laboratories. The enclosure features NEMA 12 construction with conduit raceway and a lockable master door system. All motor circuit breakers, starters, VFDs and soft starts are also NEMA rated. Control wiring is segregated from power wiring for short circuit protection.



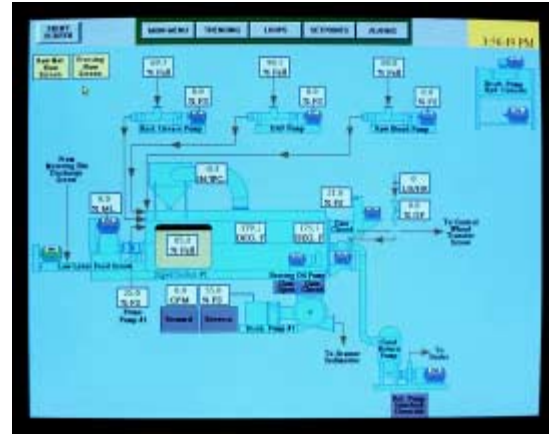
Motor Control Center (All components with 460V to 600V potential are dead fronted – dead front protective panel removed for illustration purposes.)



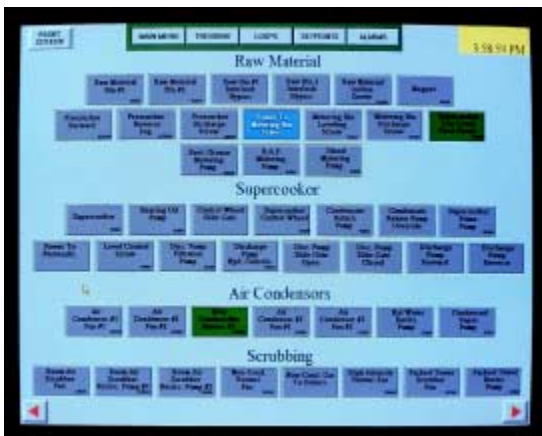
ICIS[®] AUTOMATED PROCESS CONTROL



Raw Material Animated Flow Sheet



Cooking Animated Flow Sheet



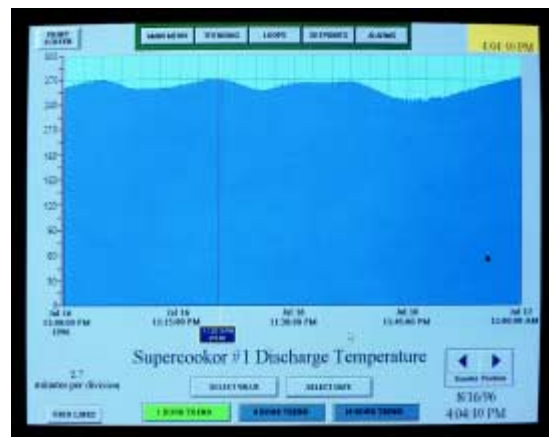
Push Buttons



Set Points



Digital Data



Data Trending

Displays can be customized for your unique process • Choose from hundreds of options

The Dupps Company



Germantown, Ohio U.S.A.

Phone: 937/855-6555 • Fax: 937/855-6554 • E-mail: info@dupps.com

Visit www.dupps.com to find in-depth descriptions of the world's leading protein recycling systems, equipment and service.

Due to ongoing product improvements, data shown here is subject to change without notice. Contact The Dupps Company for latest specifications.

© 2008 The Dupps Company

Printed in U.S.A.